

Welcome to

New York Winter Rally 2010!

The best rally drivers from the United States and from abroad will compete in this exciting two-day snow event. The course is 202 miles long with 81 miles of Special Stages. New York Winter Rally 2010 is the first round of the 2010 United States Rally Championship. Each of the two days is a separate round of New York Rally Championship.

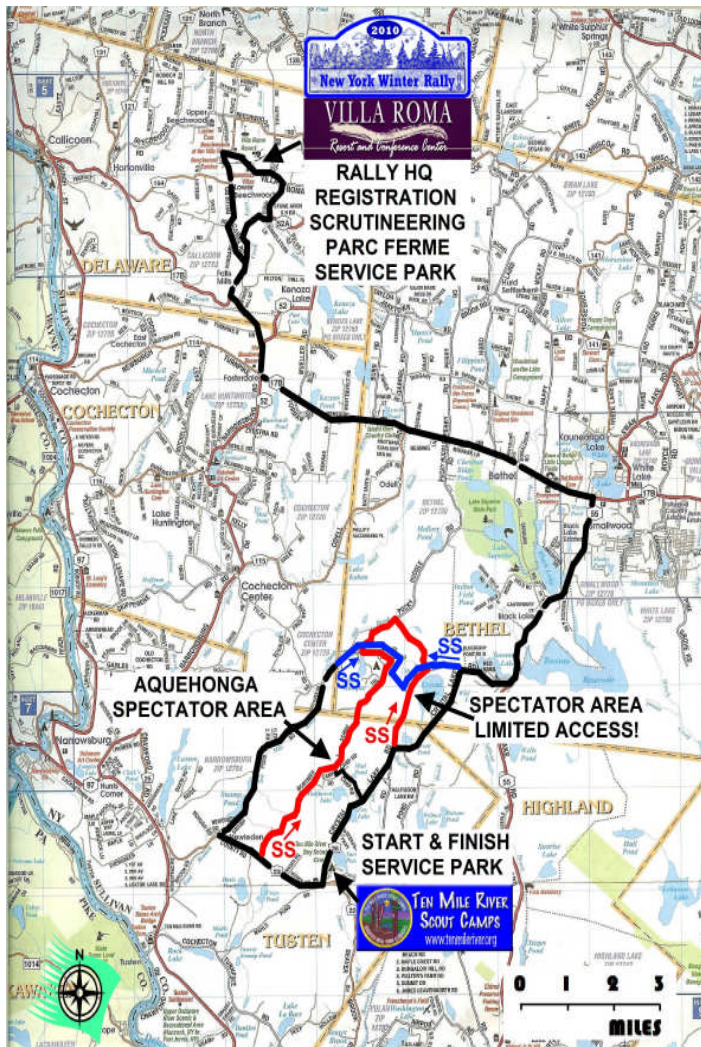
Rally Headquarters contact telephone numbers:

Before the event - (845)794-4096

During the event - (845)649-8112, (845)866-9971,
(845)701-2696, (845)866-7995

What is a Stage Rally?

It is a car rally with a number of Special Stages linked together by transit sections. The rally cars are typically small sedans such as Subaru Impreza or Mitsubishi Evo. On the Special Stages on public roads closed to civilian traffic, the rally cars start at one-minute intervals and race against the clock. On the transit sections, the rally cars drive in regular traffic and obey all traffic laws. If a competitor is observed speeding on a transit section, he is penalized and may be disqualified from the rally.



I&O ASSOCIATES
MORTGAGE CORP.

SULLIVAN COUNTY
THE CATSKILLS

VILLA ROMA
Resort and Conference Center

2010
New York Winter Rally

MOBILEMEDIC
EMS

TEN MILE RIVER SCOUT CAMPS
www.tenmileriver.org

MULTI-GENERATION
EXCAVATING, INC.
845-583-6417
845-252-3522

tearoffguys.com





SPECTATOR GUIDE

January 23 - 24, 2010

Callicoon – Narrowsburg, NY

Additional information is available at www.RallyNewYork.com

Spectator Safety

Spectators may watch the Rally only from designated Spectator Areas supervised by trained Safety Marshals and equipped with emergency radio communications and other emergency services. The access to each Spectator Area is along a separate access road and not over the Special Stage road. Spectators are prohibited from entering and walking along the Special Stage road. For your safety, please obey the instructions of Safety Marshals in the Spectator Areas.

**Please drive safely and obey speed limits
We never race on public roads open to regular traffic**

Ceremonial Start at Ten Mile River Scout Reservation Headquarters

Crystal Lake Road, Route 26 in Narrowsburg, New York

Free Admission

Display of cars and festivities – Saturday, January 23, 2010

11:30 AM – 1:00 PM

Spectator Area at Camp Aquehonga, Ten Mile River Scout Reservation in Narrowsburg, NY - Free Admission

Access: From Route 26. Parking is close to the Spectator Area. Leave the car on the side of the access road or on a side road and walk about quarter of a mile to the Spectator Area.

PLEASE DO NOT BLOCK THE ACCESS ROAD FOR OTHER VEHICLES!

The Spectator Area is on a short uphill (Saturday) or downhill (Sunday) with a high speed turn at the bottom. Viewing is somewhat limited.

Saturday, January 23, 2010 1:30 PM – 7:00 PM Cars will pass three times!

Sunday, January 24, 2010 9:00 AM – 2:30 PM Cars will pass three times!

Spectator Area at Camp Kernochan, Ten Mile River Scout Reservation in Narrowsburg, NY – Free Admission

LIMITED ACCESS AND EXIT!

Access and Exit Times: Saturday: 12:30 to 1:30, 3:00 to 3:30, 5:00 to 5:30, 7:00 to 7:15

 Sunday: 8:00 to 9:00, 10:45 to 11:15, 1:00 to 1:15, 3:00 to 3:15

Access: From Route 26. Parking is in a plowed parking area at Camp Kernochan close to the Spectator Point.

DO NOT PARK ON THE ACCESS ROAD UNDER ANY CIRCUMSTANCES!

The Spectator Area is at a t-junction. Cars will be either turning ninety degrees or going straight.

Saturday, January 23, 2010 12:30 PM – 7:00 PM Cars will pass six times!

Sunday, January 24, 2010 8:00 AM – 2:30 PM Cars will pass six times!

Ceremonial Finish with champagne-spraying ceremony

at Ten Mile River Scout Reservation Headquarters

Crystal Lake Road, Route 26 in Narrowsburg, New York

Free Admission

Display of cars and festivities – Sunday, January 24, 2010

2:30 PM – 3:30 PM

